



SearchCam EntryLink

Hazmat Wireless
Video System

EntryLink Components



- ◆ Wireless Camera
- ◆ Antenna with Tripod
- ◆ Cord Reel – 500 ft
- ◆ Receiver
- ◆ Analog-Digital Converter
- ◆ Monitor - Laptop

Wireless Camera



Features

- ◆ Battery Operated
- ◆ Transmits in 900 MHz range
- ◆ 3 hours on fully charged battery
- ◆ Waterproof to 12 ft.
- ◆ NOT intrinsically safe
- ◆ MUST be Charged before storage
- ◆ Laser Pointer
- ◆ LED Lights 100, 75, 50, 25

Wireless Camera



Controls

- ◆ Power On-Off
- ◆ Laser
- ◆ LED settings
- ◆ Channel Indicator
- ◆ Battery Charging Port

Wireless Camera



Battery

- ◆ Lithium Ion
- ◆ 3 hours on fully charged battery
- ◆ Smart Charger
 - 1.5 hr fast charge
 - 5 hr slow charge
 - Then trickle charge
- ◆ MUST be Charged before storage
- ◆ Remove Plug to charge
- ◆ Replace plug to use
- ◆ Likes to be on charger, if not at least once every 30 days

Wireless Camera



Operation

- ◆ Hold Away from Body
- ◆ Slow Movement Gives Best Picture

Antenna and Tripod



Components

- ◆ 17' Tripod
- ◆ Bottom section on ground
- ◆ Attach Antenna
- ◆ Then raise each section

Antenna and Tripod



Operation

- ◆ As close as possible without contamination
- ◆ 60 degree area
- ◆ Center on Action
- ◆ Line of sight is preferred

Antenna Cable



Operation

- ◆ Cable Needs to Run From Antenna to Receiver
 - 50 ft Cord; or
 - 500 ft Cord Reel

Cord Reel



Operation

- ◆ Live Reel
- ◆ 500 feet
- ◆ Allows safer distance of remote viewing

Receiver



Controls

- ◆ On-Off
- ◆ Antenna Indicator
- ◆ Channel Indicator
- ◆ Fixed vs Reel Switch

Analog – Digital Converter



Inputs

- ◆ Power
- ◆ Video In
- ◆ Audio In
- ◆ USB Output



Laptop Monitor



Operation

- ◆ Power
- ◆ Startup
- ◆ USB Input
- ◆ Software

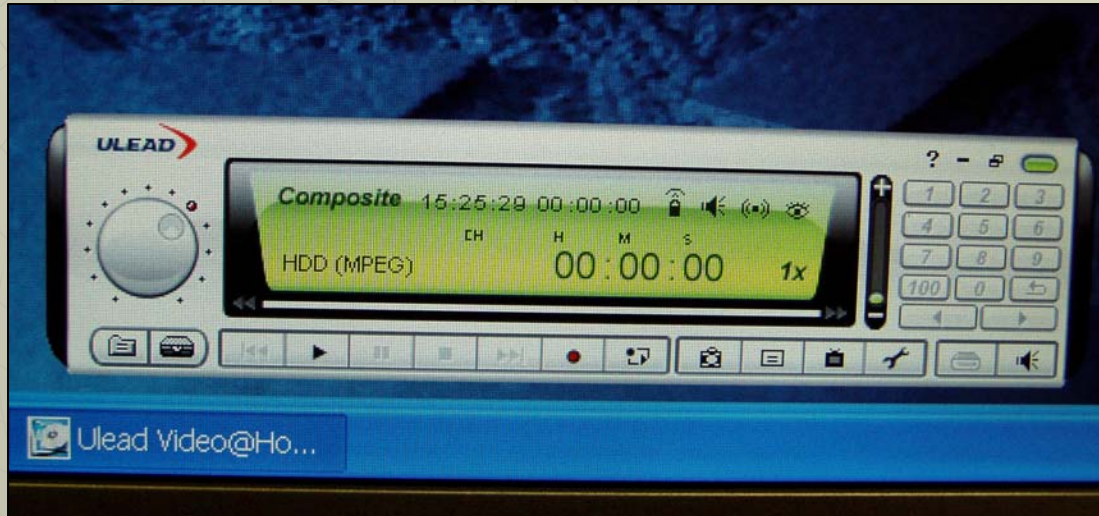
Laptop Monitor



Video Display

- ◆ Battery Status
- ◆ Direction
- ◆ LED Brightness
- ◆ Temperature
- ◆ Channel
- ◆ Elapsed Time

Laptop Monitor



Video Display

- ◆ ULead Software
- ◆ VCR Type Controls
- ◆ Record
- ◆ Playback
- ◆ 1 hr of video is approx 2 GB
- ◆ Laptop has DVD Burner



Storage Cases



Operational Suggestions



- ◆ Location
- ◆ Aiming
- ◆ Not during evidence gathering or sampling

